

OPTIGO

OptiGo is an End-to-End Visualization platform with the help of Big Data platform, OptiGo's analytical capabilities helps in the analysis of huge amount of data and processes it in a quick and efficient manner giving the user the complete view of the complete view of the network performance.

A Powerful Platform catering to a wide range of requirements of the Telecom Industry removing Vendor Dependency and being Domain Independent. Single Platform to visualize the entire Network and gain Insights into the Performance and Functioning of the Network.



A Patented Technology with a magical combination of Multi-Domain Performance, Alarm & Capacity Analysis along with Multi-Layer Topology Visualization Empowering Operators to easily spot **"WHAT"** is the actual problem, **"WHERE / WHEN"** (location) it happened, **"WHY"** (faster RCA) it occurred & **"WHO"** (subscriber) were affected.

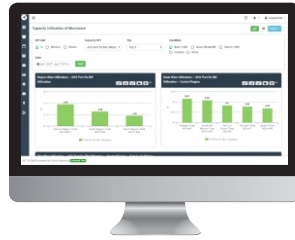
OptiGo's automated End to End Topology implements a Layered Approach in Network Visualization. It features Performance and Alarm overlay over Topology with Capacity/License Details to provide an end to end network view with faster RCA & short MTTR (Mean Time to Repair). It enables Seamless drill-down from Network-wide Topology to Region/Cluster/Node specific Card/Port Details. It incorporates Rich Multi-Layer Visualization enables precise Root Cause Analysis Specific to Domain.

BENEFITS

- OptiGo is Multi-Vendor, Multi-Domain and Multi-Technology performance monitoring solution.
- End-to-End Performance Monitoring with real-time data collection and reporting.
- Seamless integration with third party applications such as TeMIP and NetCool.
- OptiGo can integrate with the inventory system of the Network and gather the information with respect to the devices available in the network.
- OptiGo also discovers the devices in the network and storing the information in OptiGo's inventory.
- OptiGo is a one stop solution for all the Network Monitoring needs and helps in bridging the Silos.
- Root Cause Analysis to find the actual issue affecting the performance of the network by going up to the interface and object level to understand the performance of the device and also where the degradation is happening.
- With the help of historical data and OptiGo's forecasting and prediction capabilities the capacity and performance of an KPI can be analyzed and alerts can be raised to the concern informing them by when capacity and performance of an KPI will be degraded. This will make the network operator have contingency plan in place to counter this degradation.



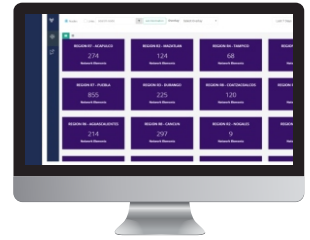
Predictive Analytics



Performance Monitoring



Anomaly Detection



Capacity Planning

CAPABILITIES

In-depth Core, IP, Transport Analysis

OptiGo user friendly GUI enables operators to analyze multi-domain (Core, IP, Transport) network issues seamlessly.

Subscriber Analytics

OptiGo Traces helps in analyzing the issues faced by an Individual user and their voice/data usage patterns. This is achieved through correlation of Events/Traces with CDR.

Automatic End to End Topology

Our unique Algorithm enables to provide 2D/3D Visualization of E2E Topology network that is drawn automatically from the Configuration files. This helps in operators to troubleshoot network and customer issues faster across multiple domains in a multivendor environment.

Anomaly Detection

Detect Anomalies with Dynamic Baselines. Get the Alerts triggered for each occurrence. Analyze the Anomalies across Vendors, Domains and correlate the problems to identify root cause.

Seamless E2E Correlation

Seamless End-to-End Correlation across multiple domains (Core – IP - Transport) which enables users to pin point the root cause quicker.

Intelligent Alerting

Perform first-level troubleshooting to assess the damage and work out possible quick resolutions. Drill-down to the root cause quickly and speed up the resolution time.

Root Cause Analysis

RCA is a single graph view of the events occurring in the network. The relative dependency between the different events across the network and the rippling effect that one change can have on the others is brought across as a single graph so that one can zero in on the root cause faster.

“

We are not Inventing the Data !

We are Correlating E2E Data Innovatively !

”



Multi-Vendor (OSS/NE)	Multi-Domain	Multi-Technology	Multi-Functionality
Ericsson Huawei	CS PS	2G 3G	PM Alarm
Nokia CISCO	IP Radio	LTE VoLTE	CM CDR
ALU ZTE	Transmission	NFV	PCRF Traces/Events

The CanGo Ecosystem

CanGo Networks is formed with an objective of End to End faster root cause analysis of network quality issues and simplifying network troubleshooting across multiple domains.

Through our vast experience in analyzing the performance of the telecom networks efficiently supported by the in-depth analysis from our flagship product OptiGo, it is now possible to have a new level of network intelligence, visibility and control over networks powered. Bringing all the domains under one platform giving the telecom networks the complete visibility of the network and their functioning. Highlighting the issues in the network and making sure the networks get E2E analysis of the network is objective of OptiGo.

Faster Insight. Faster Networking.

For more information, visit our website www.cangonetworks.com or contact us at sales@cangonetworks.com

📍 Cango Networks FZE,
P.O.Box No: 652111,
Ras AI Khaimah,
UAE.
Mobile: +971 529106680

📍 Cango Networks Pvt Ltd, (R&D)
Module #305, 2nd Floor,
NSIC Software Technology Park,
Ekkaduthangal, Chennai - 600032.
India
Phone: +91 44 43506958

📍 Cango Networks Pvt Ltd,
#4/3, Cheran Street,
Rani Anna Nagar,
Arumbakkam, Chennai - 600106.
India
Phone: +91 44 39163338